

Learning, networking, sharing all in one place: the wonders of CoPs

A discussion with Earth-Eval and EvalForward



Defining Communities of Practice

Groups of people who share a profession or domain of competence and deepen their expertise in the subject by interacting with one another



Eval Forward

Evaluation for Food Security, Agriculture & Rural Development

- ▶ Jointly supported by the evaluation offices of FAO, IFAD and WFP
- ▶ GOAL: enhancing capacities for evaluation in agriculture, food security and rural development
- ▶ AGE: 1+ year old
- ▶ MEMBERS: 500 from 90 countries
- ▶ ACTIVITIES:
 - ▶ Peer to peer exchange
 - ▶ Information sharing
 - ▶ Virtual and face to face events
 - ▶ Networking



Earth-Eval

- ▶ Hosted by the Independent Evaluation Office of the GEF
- ▶ GOAL: establish standards and norms, support capacity development, and share best practices in evaluation tied to the environment and development
- ▶ AGE: +10 years old
- ▶ MEMBERS: 1900 from +90 countries
- ▶ ACTIVITIES:
 - ▶ Blogs
 - ▶ Special Studies
 - ▶ Information sharing
 - ▶ Networking



Why join?

1

Find solutions & learn new ideas



Posted by



CHRISTINE KATAIKE ABONG

Principal Data Analyst

Local Government Finance Commission

M&E in the public sector:
How can we increase funding in agriculture?



Nabyouré Jean Stanislas OUEDRAOGO

Spécialiste en Suivi-Evaluation (Programme d'amélioration de la productivité agricole des petits exploitants en Afrique Subsaharienne)

Le financement du secteur agricole est un problème général en Afrique notamment au Burkina Faso dont je suis ressortissant. Le problème de financement se pose à mon niveau à 3 niveaux.



Bertin Dakouo

Partner (Fété Impact Development)

Cher Christine,

Les questions que vous abordez sont propres à de nombreux états sub sahariens. Une analyse de la loi des finances permet de comprendre que des secteurs bien que prioritaires dans la prospective et dans les politiques peuvent se retrouver en manque de financement pour deux raisons:



Richard Tinsley

Professor Emeritus (Colorado State University)

In response to Kelvin comment I would like to offer my opinion as to the role of M&E. That is primary reason for M&E is to represent the underwriting taxpayer or other funders to make certain funds invested are effectively used. To do this by default it become the representative of the beneficiaries. The secondary purpose of M&E is to guide future projects to more effectively identify and serve the needs of



Paul L. Mendy

Monitoring and Evaluation Specialist

(IFAD/AfDB/IsDB co-funded Gambia National Agricultural Land and Water Management Development Project (Nema Chosso) in The Gambia)

Dear EvalCommunity,

My take on the topic "Enhancing funding and service delivery in Agriculture: Any Ideas?" is simply as follows:



Emile N. Houngbo

Agricultural Economist, Senior Lecturer (National University of Agriculture, Benin)

Bonjour Chère Collègue,

Vous soulevez un problème intéressant et préoccupant qui touche le secteur agricole; le secteur que l'Afrique a tout intérêt à développer rapidement. En effet, le secteur agricole est le secteur qui utilise la majorité de la population active en Afrique. Elle y contribue pour en moyenne 35 % du Produit Intérieur

1

Find solutions & learn new ideas



Conferences



PRAGUE
SEPT 30 - OCT 4



Under the auspices of the Ministers and of the Mayor of the City of Prague
Ministry of Foreign Affairs of the Czech Republic | Ministry of Regional Development CZ



Evaluation for Transformative Change

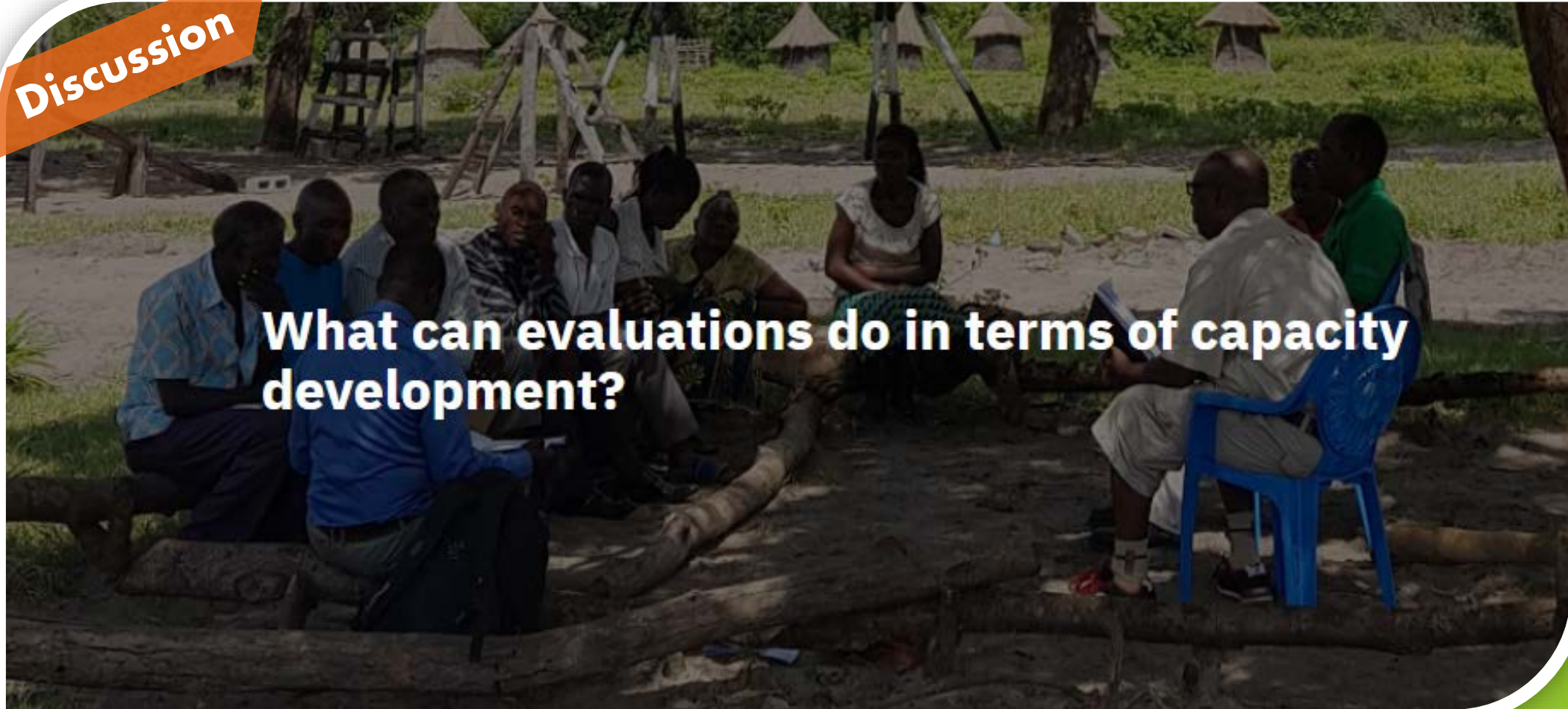
Bringing experiences of the Global South to the Global North

2

Give visibility to your work
and get feedback



Discussion




What can evaluations do in terms of capacity development?

2

Give visibility to your work and get feedback



Social Media



Earth-Eval
Catalyzing Transformational Change through Environmental Evaluation

Home About Us Blogs News & Events Studies eLibrary 2019 Conference Our Community Log In

Blogs

Blogs

We collect knowledge-rich blogs from evaluators and persons both within and without our community. These blogs offer the opportunity to narrate in less formal writing styles their personal evaluation experiences, capture evaluation findings in easy-to-understand ways while engaging the community with other relevant knowledge.

Displaying 1 - 157 of 157

Want to scale up? Change-proof your program! Lessons from the GEF (PART 2)

By: **Jensen Reyes Garcia, Evaluation Officer, GEF Independent Evaluation Office**
On: **Friday, Sep 13, 2019**

When we at the GEF IEO looked at how impact was scaled up in GEF-supported interventions, many of the interviewees used terms such as "magic moment", "luck" or "perfect storm" when referring to how scaling-up happened "spontaneously" through serendipitous circumstances, even when the project itself had no concrete plans for scaling-up. On the other hand, we also know how seemingly successful programs can quickly fall apart under political and economic changes.

How do we reduce the negative effects of such changes – and maybe even turn them into "lucky" positive outcomes? In the...

[read more...](#)

Want to scale up? Change-proof your program! Lessons from the GEF (PART 1)

By: **Jensen Reyes Garcia, Evaluation Officer, GEF Independent Evaluation Office**
On: **Thursday, Sep 05, 2019**

Change is the only constant, we all learn sooner or later. But what to do when political and economic changes threaten the success of your carefully-implemented program?

In 2018, we at the GEF IEO examined how impact is scaled up across different types of environmental interventions funded by the GEF. We looked at 20 cases in-depth, supported by evidence from an additional 40 cases, to assess which factors mattered the...

[read more...](#)

What is Safe Monitoring and Evaluation Practice in the 21st Century?

By: **Stephen Porter, Director, Learning, Effectiveness and Accountability Department, Oxfam**
On: **Tuesday, Feb 26, 2019**

Monitoring and evaluation practice can do harm. It can harm:

- the environment by prioritizing economic gain over species that have no voice
- people who are invisible to us when we are in a position of power
- by asking for information that can then be misused.

In the quest for understanding *What Works* the focus is often too narrowly on program goals rather than the...

[read more...](#)


The GEF and Cleantech: Evaluating Efforts to Build an Innovation Ecosystem

By: **Baljit Wadhwa, Senior Evaluation Officer, GEF Independent Evaluation Office (GEF IEO)**
On: **Friday, Jan 18, 2019**

Global factors such as technological advances, lowered costs, available capital, consumer demand and climate change have been encouraging the development and deployment of clean technologies as part of low-carbon economic growth. To accelerate progress in this area, emerging market countries need to look at conditions to best support solution providers.

...

[read more...](#)



Earth-Eval: Community of Practice on Environmental Evaluations
Standard group

Start a conversation in this group

Earth - Eval
Online Community of Practice
2d

[NEW BLOG] **Want to scale up? Change-proof your program! Lessons from the GEF - PART 2**
...see more

Want to scale up? Change-proof your program! Lessons from the GEF (PART 1)
eartheval.org
Change is the only constant, we all learn sooner or later. But what to do when political and economi...

Like Comment

Dennis Bours • 1st
Adaptation Fund - Technical Evaluation Reference Group (AF-TERG) Secretariat ...
2d

AF-TERG STC position ex-post evaluation study, up to 60 days under FY20.

Do you want to contribute to the journey the Technical Evaluation Refer...see more

2,963 members

Invite members

About this group

Earth-Eval is hosted by the Global Environment Facility Independent Evaluation Office (GEF IEO) with the support of its partners as a key component of the follow-up efforts of the International Conference on Evaluating Climate Change and Development.

Show more



Promote good practice



Blog



Evaluation and participation in rural communities:
drawings that show how lives have changed

Wednesday, May 8, 2019

WFP Country Office in Colombia conducted its decentralized mid-term evaluation and shared results with cooperating partners and communities involved using an innovative and participatory approach.

The evaluation

The WFP country office in Colombia carried out the mid-term evaluation of its Prolonged Relief and Recovery Operation (PRRO) which includes innovative food-assistance elements that take into account

POSTED BY



GIOVANNA VACCA
Communications Officer
World Food Programme

LINKS

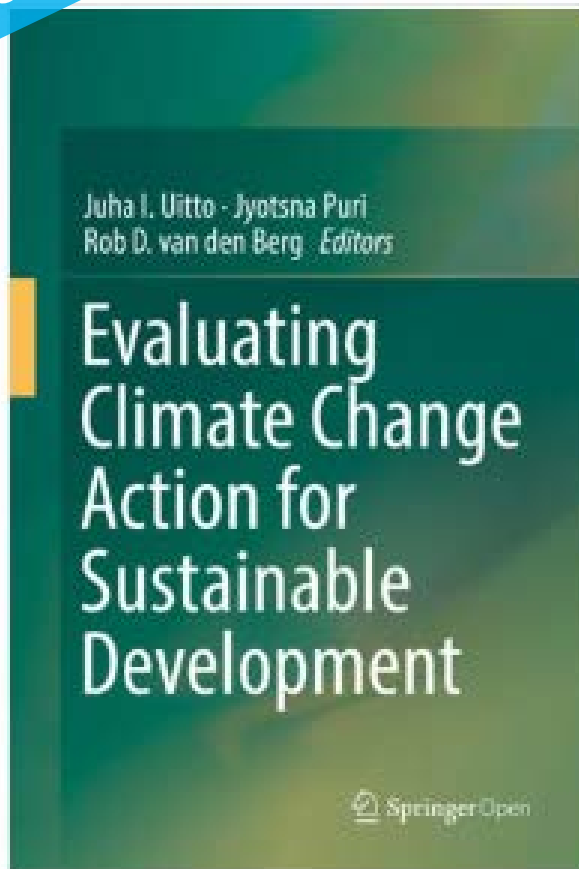
[Prolonged Relief & Recovery Operation mid-term evaluation](#)

3

Promote good practice



Publications



Studies

Good Practice Study on Principles for Indicator Development, Selection, and Use in Climate Change Adaptation Monitoring and Evaluation



The Independent Evaluation Office of the Global Environment Facility (GEF IEO) has undertaken - on behalf of Climate-Eval - a Good Practice Study on Indicator Development, Selection and Use Principles for Climate Change Adaptation M&E. This study identifies and addresses key challenges concerning M&E for CCA by documenting good practices and related principles on the development, selection, and use of indicators used in the M&E of adaptation interventions.

[read more...](#)

Scoping Study on Evaluation of Natural Resource Management Interventions linked to Climate Change



The Scoping Study on Evaluation on Natural Resource Management (NRM) Interventions linked to climate change was carried out by the Independent Evaluation Office of the Global Environment Facility (GEF IEO) on behalf of the Climate-Eval community of practice.

[read more...](#)

Guidelines to Climate Mitigation Evaluations



By: Dr. Christine Wörten

These guidelines for climate mitigation evaluations are intended to clarify some of the persistent evaluation and measurement issues associated with climate mitigation interventions. This paper is a contribution towards solving some of the persistent methodological questions by formulating guidelines facing climate change mitigation evaluation. It has a focus on a theory-based approach for evaluating mitigation interventions and deals with a number of conceptual and practical challenges.

[read more...](#)



Expand your network



Members

HOME > MEMBERS

Filter by Name

Filter by Country

- Any -



Search



DOROTHY LUCKS

EXECUTIVE DIRECTOR
SDF GLOBAL PTY LTD, Australia



Giovanna Vacca

Communications Officer
World Food Programme, Italy



Christian Doly

Profesional
Programs Evaluation Advisor, Canada

4

Expand your network



Social Media



Earth-Eval
@EarthEval

A community of practice on sharing best practices in #environmental #evaluations. Hosted by the GEF Independent Evaluation Office (@gefio_tweets).

Washington, DC eartheval.org Joined April 2011

698 Following 1,243 Followers

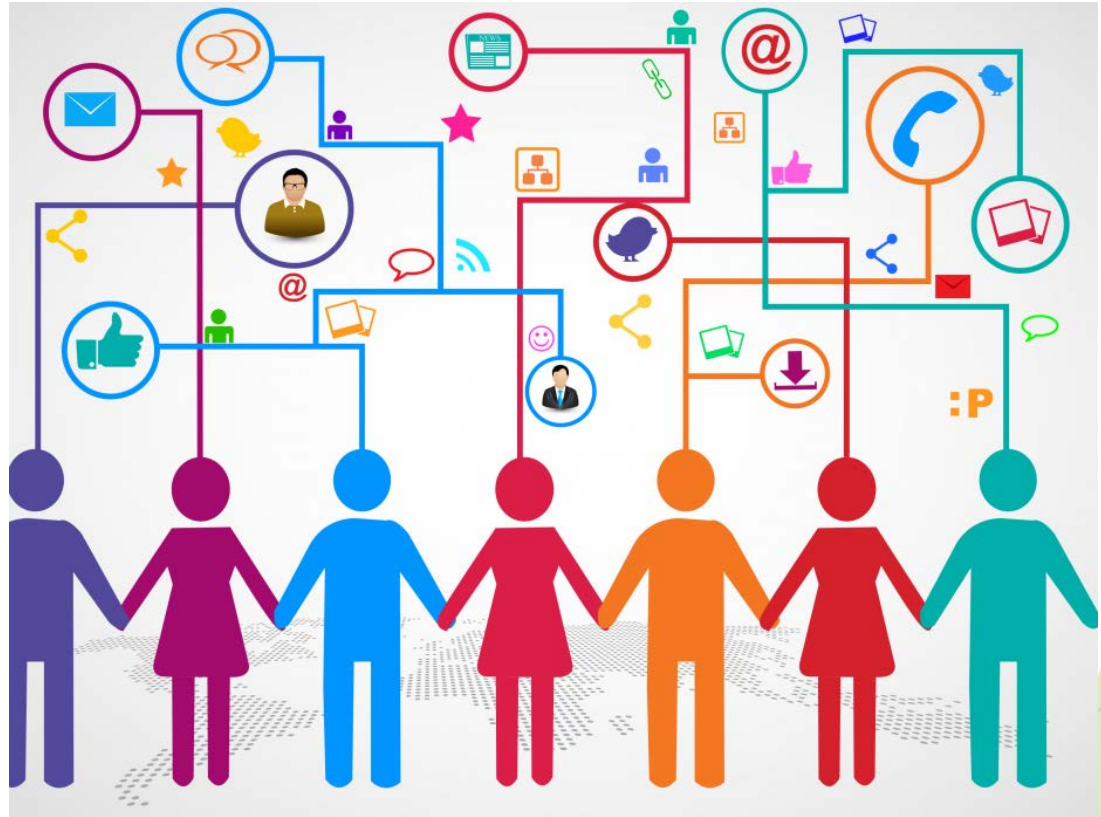
Tweets Tweets & replies Media Likes

Pinned Tweet

Earth-Eval @EarthEval · Oct 26, 2017
Learn about @EarthEval by visiting youtu.be/103iZ91qwSQ #environment #evaluation

About Earth-Eval
Earth-Eval (previously known as Climate-Eval) is an online community of practice hosted by the ...
youtube.com

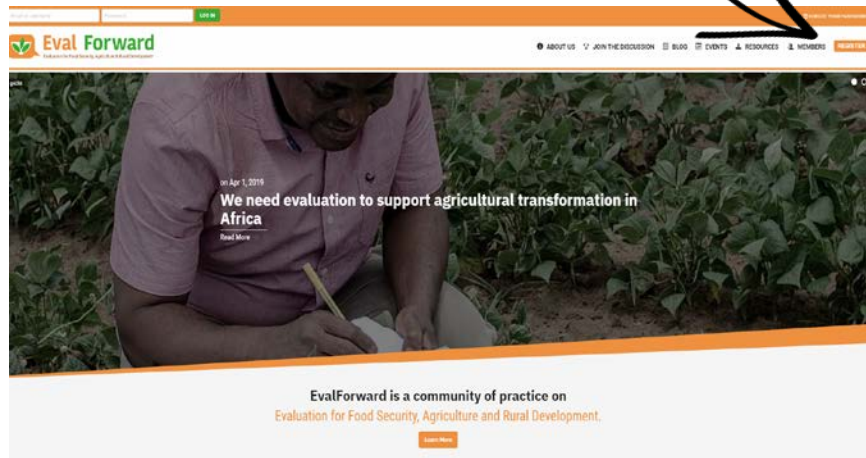
Earth-Eval @EarthEval · Sep 17
Part 2 of the blog "Want to scale up? Change-proof your program! Lessons from #theGEF" is now available bit.ly/2IS1ot1



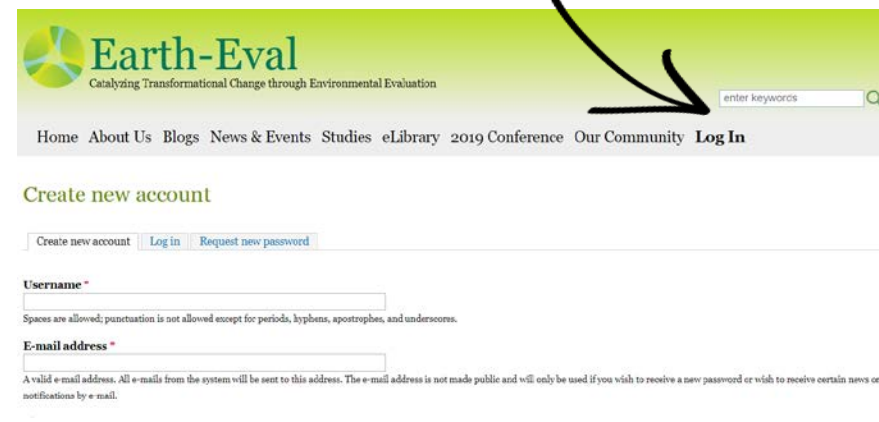
Let's hear from members

Please welcome Jackye Yiptong Avila and Serge Eric Yakeu!

Register



Contact:
Renata Mirulla
info@evalforward.org



Contact:
Malac Kabir
eartheval@gmail.com